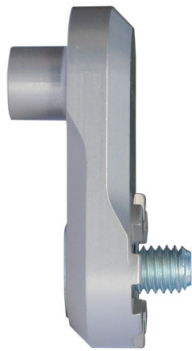


Vario Plate (Adapter)



The Vario plate (adapter) is the part between the footpeg and the Vario footrest system (joint).
You can see the complete footpeg lowering on pictures 2, 3 and 4.
You need these 3 items! You can see matching footpegs and Vario footrest systems (joints) below.
You cannot use the original footrest.

The Vario plate (adapter) is silver anodized and available in 3 lengths: 23 mm, 30 mm and 50 mm.
We recommend 50 mm only for the pillion rider.
Delivery: 1 set (for left and right).

Art-Nr.: 051 00 00 23	54,90 EUR
23 mm Vario Plate (for left and right)	

Art-Nr.: 051 00 00 30	54,90 EUR
30 mm Vario Plate (for left and right)	

Art-Nr.: 051 00 00 50	56,90 EUR
50 mm Vario Plate (for left and right)	

Not allowed for the driver!

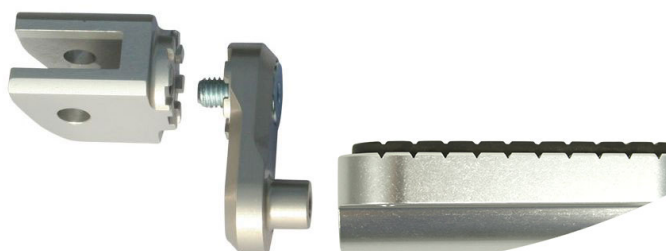
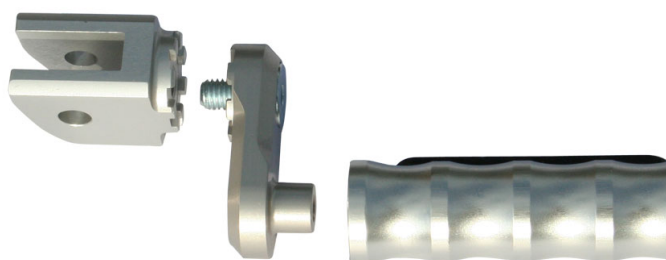
Art-Nr.: 051000023-8	54,90 EUR
23 mm Vario Plate black (for left and right)	

Art-Nr.: 051000030-8	54,90 EUR
30 mm Vario Plate black (for left and right)	

Art-Nr.: 051000050-8	56,90 EUR
50 mm Vario Plate black (for left and right)	

Not allowed for the driver!

Additional pictures:



051 00 00 23



051 00 00 30



051 00 00 50



051000023-8



051000030-8

051000050-8

